



February 2026 Newsletter

President's Message-Ginny Sparlin

Hi Everyone,

It was great to see everyone again at the January meeting, what a great turnout on a beautiful day. Finishing all those U.F.O.'s is a great accomplishment, now we can get started on the next cool project.

At the February 21 meeting Deb Poster will be leading a wonderful Zentangle project of your choice. Everyone at the February meeting picked out their pattern line drawing, either penguins or cats. This should be a fun, loose project. Hope to see you all there.

If you were at the meeting, you already know. If you were not at the meeting our sweet member, Kate Dowd graciously donated the most amazing quilt to our group, for us to use to make some money for the group. The quilt features hand painted Snow Men on each block and is Full/Queen size. It was painted by Kate and other members of her chapter when she lived down in Florida a few years ago. Kate won it and lovingly took care of it and now she is downsizing and wants to give someone else a chance to cherish it. When you see it, you'll want it! It would be beautiful on a bed or hung on the wall or draped over a couch or day bed. It's absolutely wonderful. You'll see a picture of it in the Newsletter.

When the board met earlier this month, we loosely put together a plan. We can exchange tickets for donations of 6 tickets for \$5.00. With a drawing for the quilt at our November Christmas meeting. If you plan to have a booth at a craft sale or maybe a quilt or some other guild, get together, we'd love for you to take tickets and either a picture or the quilt to display and sell as many tickets as possible.



We also threw out some ideas for what to do with the proceeds. Things like bringing in a teacher for a seminar or paying for the group to visit an art exhibit, if you have any ideas, please call me or talk to me at a meeting. We'd love to do something fun that all our members can participate in, but we don't have all the details of it nailed down. Since Covid, travel teaching is almost nonexistent, which narrows down the possibilities. Also, deciding on a medium and a project that will interest everyone is tricky too.

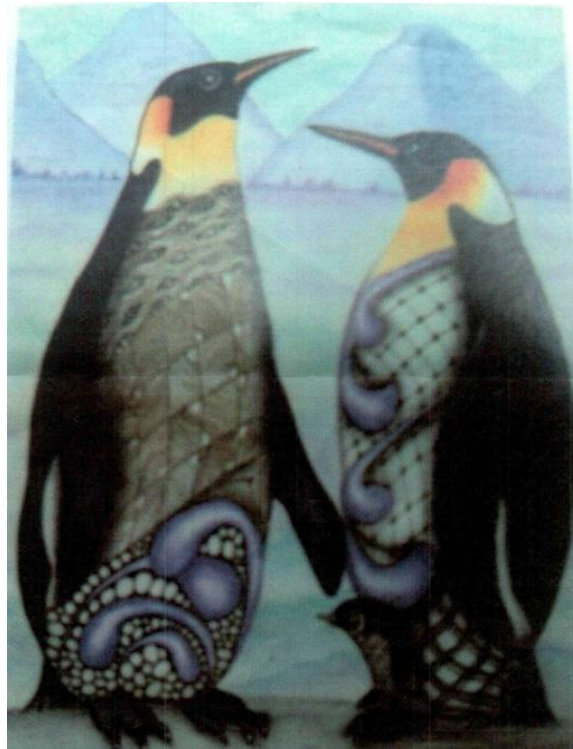
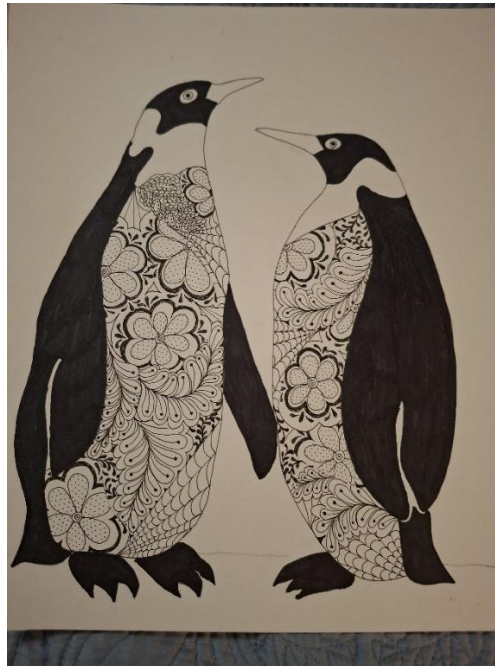
I'll plan to have the quilt at the February meeting so you all can see it in person, and we'll have tickets available too. Hope to see you all at the meeting.

Ginny Sparlin

Monthly Program Report-Deb Poster

Hi Everyone!

Are you ready to "Doodle"? This month's project is a pair of penguins with their mid-section "doodled"! Feel free to choose any other animal or even a flower to doodle. Use any type of paper or sketch book you want. If you would like to add color, bring colored pencils.



- ✚ Supplies: paper surface, any size for your design.
- ✚ Black permanent marker. If using Sharpie, bring all sizes.

At home prep - Trace/transfer design to your surface. Outline with black sharpie and fill in solid design areas as desired with black (any color) Sharpie.

We will "doodle" in class. If you have saved any ideas for doodling, be sure to bring them. This should be a relaxing exercise! I will bring some books for ideas.

REMEMBER - feel free to bring UFOs if you don't want to do this project! We had SO much fun visiting/snacking in January! It's a lot of fun to see what everyone is working on.

Respectfully,

Debbie Poster

FYI-Line drawing of penguin at end of newsletter

Tole Chatter-Melinda Barnes

Shaker Boxes... this website and link was provided by Judy Westergaard in the Artful Ties group. So if you are in the market for a good Shaker Box this is the place to go.

<https://www.lehays.com/>

Angela Anderson... Nice tutorials and patterns.

<https://thankfulart.com/>

Holly Hanly... For those of you who follow Holly on Facebook you have seen her short tutorials on surface she made from Candy Molds she uses from Amazon. Holly files the molds with hot glue, lets them cool and pops them out. She then paints them and they are adorable! Below is the link to Amazon of the molds. Clever isn't it!

<https://www.amazon.com/HKNMTT-Christmas-Chocolate-Snowflake-Gingerbread/dp/B0CLY4QK5P?th=1>

Ronnie Bringle... This is s heads up! Ronnie plans to add some patterns at 50% off soon. I will keep you informed. Ronnie was one of my favorite designers.

<https://ronniebringle.com/>

Marlene Kreutz... Be sure to check out Marlene's website often. She adds new patterns often.

<https://marlenekreutz.com/>

Rusty Tin... if you are a fan of rusty tin Barb (owner of RustyTin.com years ago) told me she wants to do eBay again and add rusty tin for sale. I will let you know if she tells me it is done.

TRACY MOREAU'S SPOT

Did you know...

Water gilding in the Renaissance refers to a technique where artists applied thin sheets of gold leaf to a surface using a water-based adhesive, typically on a special prepared ground called "bole," creating a luxurious, gilded finish commonly seen on religious artwork, frames, and other decorative elements; it was a meticulous process considered one of the highest forms of decorative art during that period.

The surface would be prepared with layers of gesso (a mixture of glue and chalk), then a layer of bole (a red clay) was applied, followed by a thin layer of "size" (water-based adhesive) onto which the gold leaf was carefully laid and burnished to achieve a smooth finish.

Water gilding was widely used to enhance the appearance of religious paintings, sculptures, and altarpieces, often highlighting important details or creating a sense of grandeur and opulence.

Did you know...

Louise Élisabeth Vigée Le Brun (known as Madame Le Brun) painted more than 30 portraits of Marie Antoinette over a six-year period before fleeing during the French Revolution. Although she later returned to France, she became more successful throughout the rest of Europe. Vigée Le Brun's lifetime of work includes 660 portraits and 200 landscapes. In addition to many works in private collections, her paintings are owned by major museums, such as the Louvre in Paris, Hermitage Museum in Saint Petersburg, National Gallery in London, Metropolitan Museum of Art in New York, and many other collections in Europe and the United States.

Tracy shares her talent with a free project almost every Saturday on Facebook and YouTube.com.

Tracy's website: <https://tracymoreau.net/>

Computer Security...

If you think you have been affected by a data breach, here are steps you can take to protect yourself:

Check the company's advice. Every breach is different, so check with the company to find out what's happened and follow any specific advice it offers.

Change your password. You can make a stolen password useless to thieves by changing it. Choose a strong password that you don't use for anything else. Better yet, let a password manager choose one for you.

Enable two-factor authentication (2FA). If you can, use a FIDO2-compliant hardware key, laptop, or phone as your second factor. Some forms of 2FA can be phished just as easily as a password, but 2FA that relies on a FIDO2 device can't be phished.

Watch out for impersonators. The thieves may contact you posing as the breached platform. Check the official website to see if it's contacting victims and verify the identity of anyone who contacts you using a different communication channel.

Take your time. Phishing attacks often impersonate people or brands you know, and use themes that require urgent attention, such as missed deliveries, account suspensions, and security alerts.

Consider not storing your card details. It's definitely more convenient to let sites remember your card details, but it increases risk if a retailer suffers a breach.

Google Calendar.... I know a lot to you use the calendar on your phone. Of course I don't know which one you use, but if it is Google this info is important for you.

How to stay safe

It's worth remembering that AI assistants and agentic browsers are rushed out the door with less attention to security than we would like.

While this specific Gemini calendar issue has reportedly been fixed, the broader pattern remains. To be on the safe side, you should:

Decline or ignore invites from unknown senders.

Do not allow your calendar to auto add invitations where possible.

If you must accept an invite, avoid storing sensitive details (incident names, legal topics) directly in event titles and descriptions.

Be cautious when asking AI assistants to summarize “all my meetings” or similar requests, especially if some information may come from unknown sources

Review domain-wide calendar sharing settings to restrict who can see event details.

Sorry there is more computer info than painting info.

Melinda

Penguin line drawing (two sizes)

